



TILT ABLE PACKAGING AND ASSEMBLY TABLE SOP-1 MINI

Key features:

- This special table, thanks to its small dimensions and mounted wheels, can be easily moved to the place where it is needed.
- The wheels with a brake to lock table in place position.
- The table can be used for packing elements, assembly of larger parts. The tilting top allows easy removal or placement of the element from an almost vertical position.
- The front brackets of the table top can be rotated, which allows for easy handling of the element on the table. For example, one can place an element larger than the table top in order to wrap it underneath.
- The table is made of powder coated steel profiles.
- Tabletop is optional: carpet-covered tabletop with steel sliding rails / stainless steel-covered tabletop / tabletop made of high quality, water-resistant plywood or MDF with PVC finish.
- The table top tilts down to 80 degrees.
- Distance from the floor to the edge of the tabletop - 120 mm.
- The use of an electric motor ensures high stability of the table in every position of the table top.
- The solutions used exclude the possibility of the table top falling down automatically after a power outage.
- Comfortable control via foot pedals.

Specifications:

Tabletop size: 1700x1000 mm (66.92" x 39.37")

Weight: 250 kg (551 lbs)

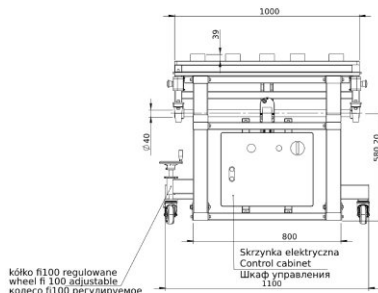
Voltage: 230 V

Power: 1.5 kW

Maximum bearing capacity: 100 kg (220 lbs)

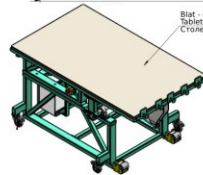
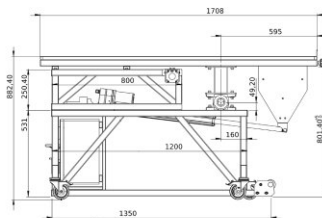


Scan the code



kółko \varnothing 100 regulowane
wheel \varnothing 100 adjustable
колесо \varnothing 100 регулируемое

Skrzynka elektryczna
Control cabinet
Шкаф управления
110



Blat - do wyboru
tabletop optional
Столешница опционально
Przednie żebry regulowane
front brackets
Передние кронштейны



